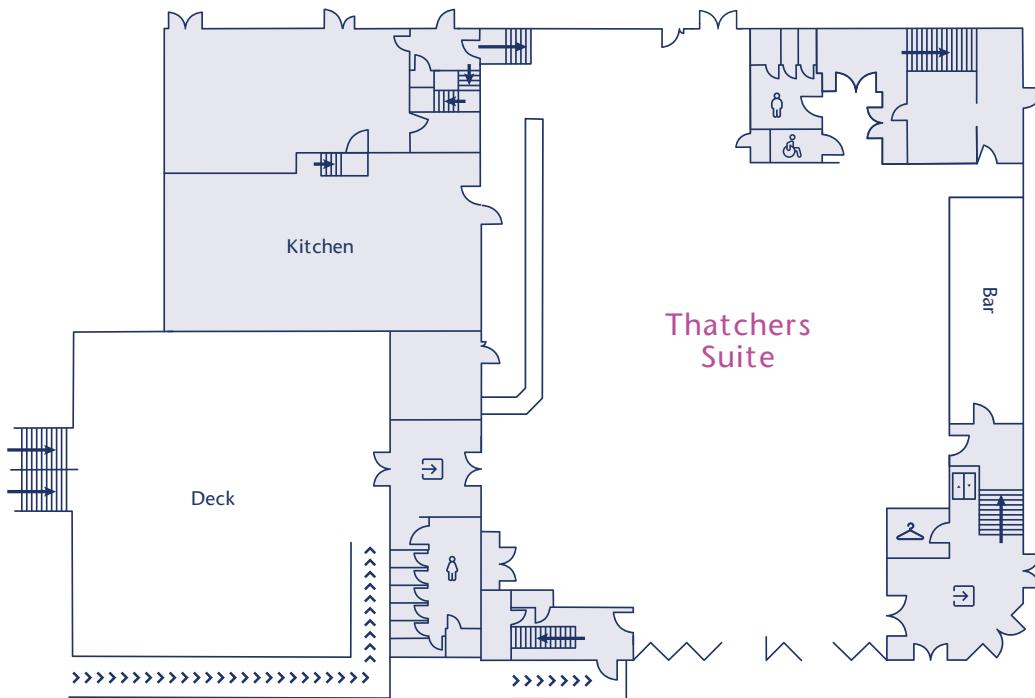


Wessex Pavilion: Floor Plans



Ground Floor: Thatchers Suite

Bar & Restaurant

➤ Approx. 622m²

Deck

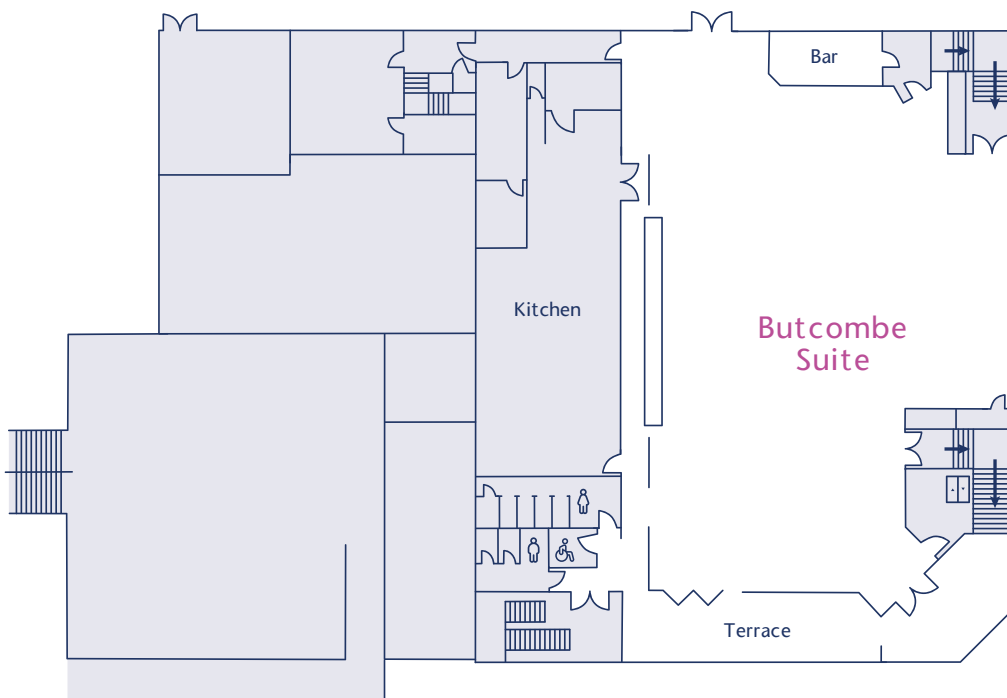
➤ Approx. 215m²

Max. Capacity

➤ Approx. 500 (seated)

Facilities

- W/C
- Kitchen
- Bar
- Servery
- Lift
- Deck
- Disabled Access



First Floor: Butcombe Suite

Bar & Restaurant

➤ Approx. 436m²

Terrace

➤ Approx. 62m²

Max. Capacity

➤ Approx. 300 (seated)

Facilities

- W/C
- Kitchen
- Bar
- Servery
- Lift
- Terrace
- Disabled Access

Key	Main Entrance	Ladies W/C	Lift	Bifold Doors
	Men's W/C	Disabled W/C	Cloakroom	Access Ramp

Tel: 01749 345860
 Email: info@wessexpavilion.co.uk
 Web: www.wessexpavilion.co.uk

Wessex Pavilion
 The Bath & West Showground
 Shepton Mallet, Somerset. BA4 6QN